

Modified Corner Kick Rule Change: A Guide for Gameleaders

THE RULE CHANGE

When to Award a Corner Restart

A corner restart is awarded when the defending team touches the ball last before it goes over their own goal line (provided no goal is scored).



New Ball Placement

The ball must be placed 5 yards up the sideline from the traditional corner flag, rather than at the corner itself.



Dribble or Pass Into Play

Players now have the choice to either dribble the ball directly into play or pass it to a teammate.



WHY THIS CHANGE MATTERS



Encourages Skill Development

By allowing dribbling, the rule fosters player confidence, better decision-making, and technical growth.



Maximizes Playing Time

Faster restarts mean less "standing around" and more active time with the ball for every player.



Discourages Negative Play

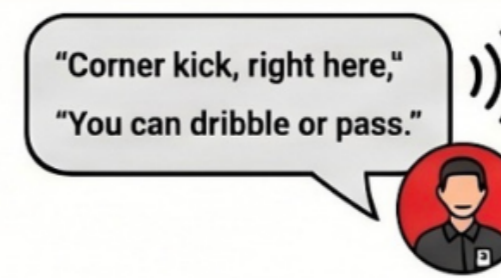
The change prevents defenders from intentionally kicking the ball out of bounds just to force a traditional, slow-restarting goal kick.

HOW TO MANAGE THE GAME



Guide the Positioning

Help players by pointing to the correct spot 5 yards up the sideline and ensuring defenders provide adequate space.



Use Helpful Verbal Cues

Support learning by saying phrases like the one shown above.



Maintain a Calm Environment

Management should be kept simple and calm to support the developmental nature of the age group.

SUPPORT AND CONTACT

Direct Questions to Match Official Management

For further clarification, reach out to the Match Officials team, at matchofficials@ontariosoccer.net